

1162 Chobert

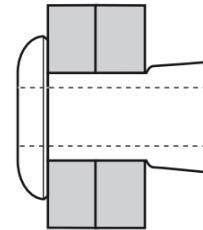
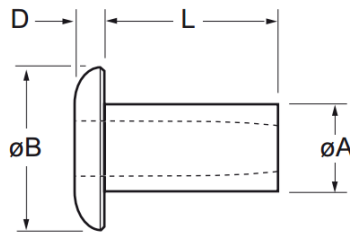
Aluminium - Low profile head
3.2 mm (1/8") - 4.8 mm (3/16")

Features

- Consistent controlled clamp, ideal for soft or brittle materials
- Internally tapered bore ensures consistent light clamp to reduce potential damage to materials
- Expands radially during installation to ensure maximum hole fill
- Lower in-place costs than welding or nail rivets
- Ideal pivot pin or hose tail
- Can be bowl fed for larger volume applications using automated equipment

Material

- Aluminium alloy, natural (2.5% Mg)



Part No.	Size ø	Grip Range		Hole Size		øB max.	D max.	L max.	øA max.	Fasteners per pod ± 1	Shear (typical) kN
		nom.	min.	max.	min.						
01162-00404	3.2 (1/8")		0.00	1.57	3.26	3.34	6.66	1.05	3.24	32	0.60
01162-00406			1.57	3.17							
01162-00408			3.17	4.75							
01162-00410			4.75	6.35							
01162-00412			6.35	7.92							
01162-00414			7.92	9.52							
01162-00416			9.52	11.10							
01162-00506	4.0 (5/32")		1.57	3.17	4.09	4.17	8.16	1.30	4.05	32	1.00
01162-00507			2.36	3.93							
01162-00508			3.17	4.75							
01162-00510			4.75	6.35							
01162-00512			6.35	7.92							
01162-00514			7.92	9.52							
01162-00516			9.52	11.10							
01162-00605	4.8 (3/16")		0.00	1.57	4.85	4.93	10.06	1.55	4.82	24	1.50
01162-00607			1.57	3.17							
01162-00609			3.17	4.75							
01162-00611			4.75	6.35							
01162-00613			6.35	7.92							
01162-00615			7.92	9.52							
01162-00617			9.52	11.10							
01162-00619		11.10	12.70								